



Let's Help International (LHI)

Introduction

LHI is a humanitarian organization dedicated to empowering marginalized communities. Founded in 2020, we focus on education, digital inclusion, Livelihood, WASH, Climate Action, Protection, advocacy, and mental health support.

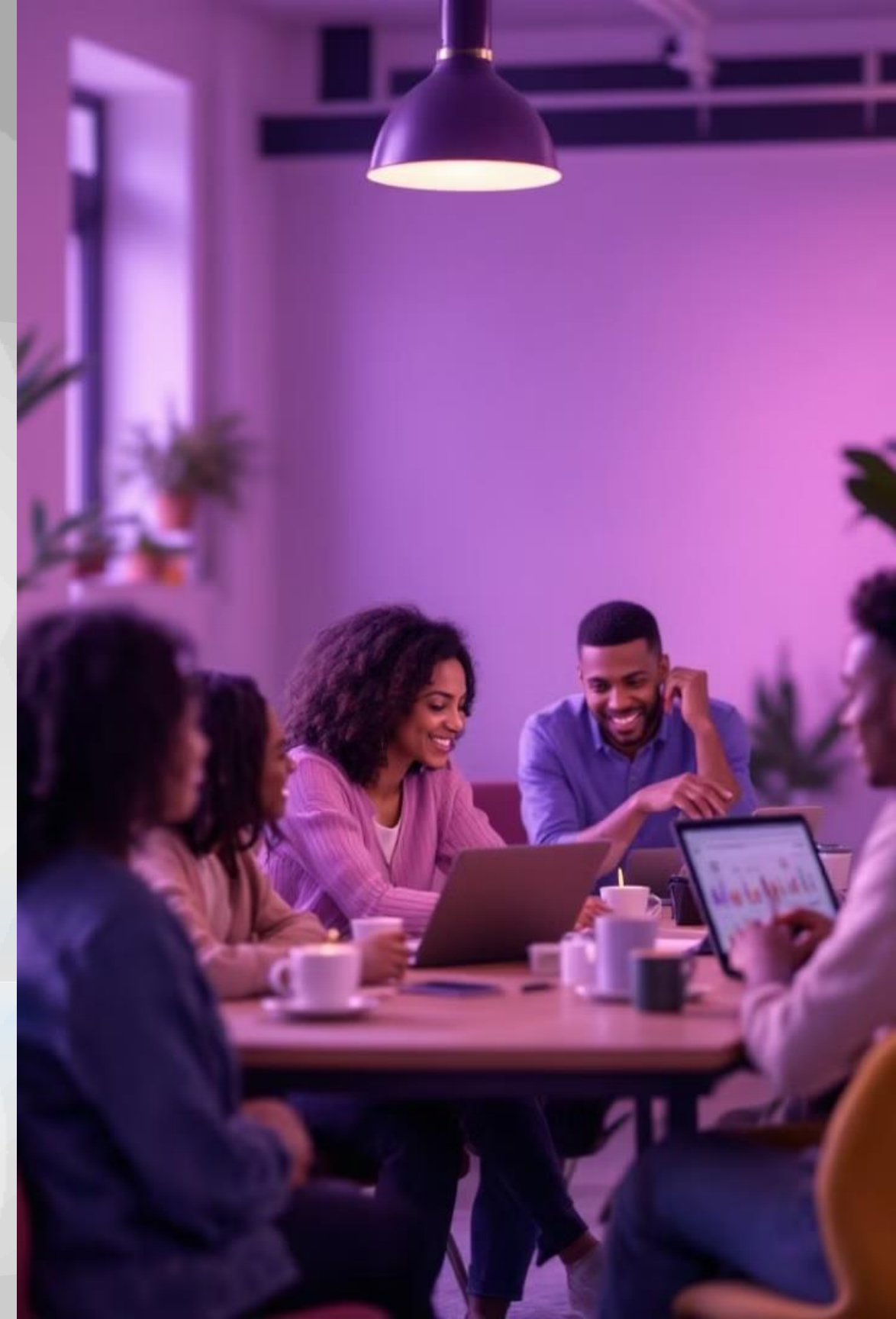


Vision:

A world where everyone, regardless of background, thrives through inclusion, empowerment, and opportunity.

Mission:

Our mission is to deliver immediate assistance while fostering sustainable solutions for long-term, positive impact.



Our Core Values

Inclusivity

We believe in providing equal access to essential resources for everyone, regardless of background or circumstance.

Empowerment

We equip individuals with the skills and confidence needed to reach their full potential and achieve their goals.

Resilience

We offer support to help communities overcome challenges and build a stronger, more resilient future.



LHI's Work in Canada

Digital Literacy Training

Free one-month online training on computer skills and internet navigation.

Mental Health Support

Counseling and workshops for resilience building.

Children Sponsorship Program

Connecting vulnerable children with sponsors for education and well-being support.

Free Tax Clinics

Helping low-income individuals file taxes and access benefits.



LHI's Impact in Uganda



Digital Inclusion

Digital skills training.



Education

Formal schooling support with supplies and school fees.



Livelihood

Addressing malnutrition, family care, and behavior change communication (BCC)

LHI's Impact in Uganda



Protection

Formal schooling support and digital skills training.



Climate Action

Energy-Saving Stoves Project empowers women for sustainable cooking.



WASH

Clean water access through innovative water tanks and latrines.

LHI's Initiatives in South Africa

Food & Clothing Distribution

Providing meals and essentials to vulnerable communities.

Media Advocacy

Empowering refugees to share their stories and advocate for rights.

Support During Harsh Weather

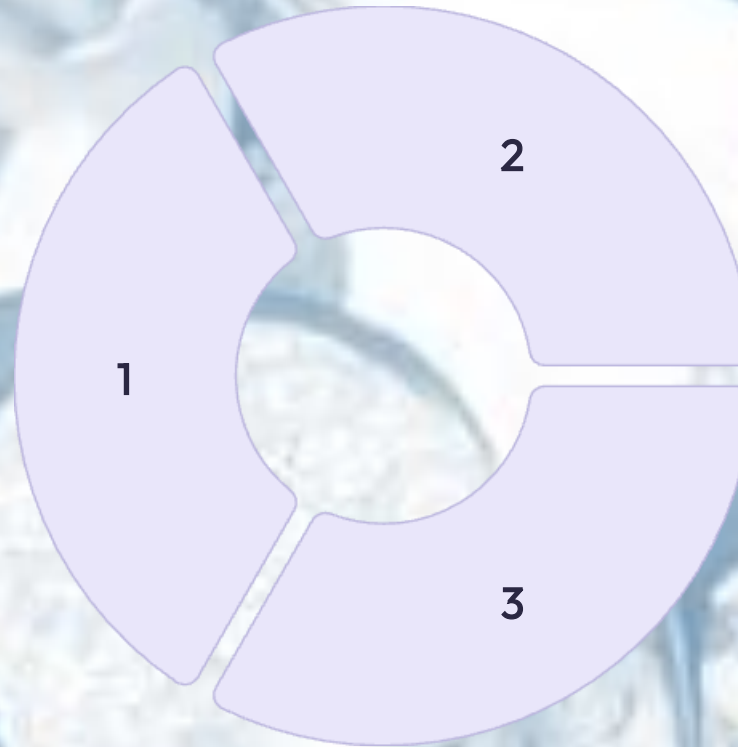
Warm clothing drives for refugees and homeless individuals.



LHI's Programs in Rwanda

Mental Health Support

Direct assistance and medical insurance for mental health And vulnerable people.



Educational Activities

School supplies and meals for underprivileged students.

Women Empowerment

Support for women-led families and street vendors.

Our Partners



Government of Canada

Gouvernement du Canada

Canada

Canada



canada revenue agency

Alberta

Government



UNHCR Innovation Service



Finn Church Aid



KRLON



KYAKA-2.COM



Little by Little Educational Services



EDMONTON HOPE MINISTRY

Contact Us

Phone: +1 825-523-7701

Address: #6, 103 Village
Acres, NW, Edmonton,
Alberta, Canada



Email: info@letshelpinternational.org Website: www.letshelpinternational.org