



# LET'S HELP INTERNATIONAL-LHI

*"Charity Organization"*

Tel: +256 779686582, (+256) 785390442 (+256) 750983012

E-mail: [info@letshelpinternational.org](mailto:info@letshelpinternational.org)

Website: [www.letshelpinternational.org](http://www.letshelpinternational.org)

Kyegegwa, Uganda.

## LHI ANNUAL REPORT 2020



December 28, 2020

**Contents**

I. INTRODUCTION ..... 1

1.1 ABOUT LHI..... 1

MISSION..... 1

VISION..... 1

OBJECTIVES ..... 1

MOTO ..... 2

VALUES ..... 2

ACTIVITIES..... 2

II. LHI REALIZATIONS IN 2020 ..... 3

2.1 Administration ..... 3

2.2. Education for Vulnerable Children ..... 4

2.3. Family care & B.C.C= Behavior Change Program. .... 4

III. CREATION OF LET'S HELP INTERNATIONAL –LHI AS A CHARITY ORGANIZATION ..... 4

3.1 LHI CREATION GENERAL PHILOSOPHY ..... 4

3.2 ELABORATION OF THE CONSTITUTION AND STAFF ELECTION..... 6

3.3 LEGAL OPERATING LICENCE ..... 6

3.4 THE WAKE OF LHI ON THE WORLD WIDE WEB AND SOCIAL NETWORKS..... 6

3.5 LHI BANKING SYSTEM ..... 6

3.6 LHI OFFICE INAUGURATION ..... 6

IV. LHI ON THE WORK GROUND ..... 7

4.1 IDENTIFICATION OF MOST VULNERABLE CHILDREN ..... 7

4.2 LHI STAFF TRAINING ABOUT FAMILY PLANNING –F.P ..... 7

4.3 HOME TO HOME SENSITIZATION WEEK ABOUT FAMILY PLANNING ( FROM 14-18/12/2020) ..... 8

4.3.1 TABLE SUMMARY WORK CHART..... 8

4.3.2 EVALUATIONAL TABLE CHART ..... 8

V. CHALLENGES AND OPPORTUNITIES..... 9

VI. CONCLUSION ..... 9

## I. INTRODUCTION

The year 2020 was full of many difficulties because of COVID-19 Pandemic lockdown but LHI Managed to accomplish many hard tasks which are presented in this report.

### 1.1 ABOUT LHI

Let's Help International (LHI) is a non-profit organization that advocates for the physical, cognitive and social development of vulnerable children, youth and families as well as refugees and other people in need mostly.

It was founded on August 2nd, 2020 in Kyegegwa District, Uganda, East Africa by two Congolese Refugees and one Ugandan by nationality.

LHI seeks to break the cycle of poverty by providing access to education for vulnerable children and continuous training to youth and support to families, so that they in turn play a positive role in their communities.

LHI operates with what it raises from sponsors, social events, funds or donations, as well as from volunteers and its sustainable activities.

### MISSION



To improve the quality of life of children, youth and families with limited resources or who live in vulnerable sectors through helping them to access to education, Training, welfare and behavior change, in turn they are able to change their future positively.

### VISION

A world where every person's fundamental needs are catered for so that they are able to craft a successful future for themselves.

### OBJECTIVES

§ Promote, support and finance the educational development of low-income boys and girls in order to mitigate and eradicate educational gaps in vulnerable communities

§ Contribute to the training of people in vulnerable sectors through programs that promote educational and professional development for the generation of new jobs and their maintenance.

§ Behavior Change to the community for a better life

§ Promote respect, exercise and defense of human rights, children and adolescents to promotes equity, equality and diversity of people

§ Link the low-income population with sponsors for a positive change of their lives.

## **MOTO**

Stand up for the needy

## **VALUES**

§ Act with social responsibility

§ Cooperation

§ Charity

§ Integrity

§ Excellence

## **ACTIVITIES**

### **1. Education for Vulnerable children**

For many children of under development countries, education is an unattainable dream. LHI provides the tuition fees and scholastic materials for vulnerable children.

### **2. Youth Training for professional skills**

LHI provides machinery and materials for vocational training. This enables the youths to find employment or start their own business for self reliance.

### **3. Family Care Program & BCC- Behavior Change Communication**

This Program aims at helping neediest families by providing basic needs such as, Foods, Clothes, Shelter and BCC: Behavior Change Communication.

**BCC** is an interactive process with communities to develop tailored messages and approaches using a variety of communication channels to develop positive behaviors; promote and sustain individual, community and societal behavior change; and maintain appropriate behaviors.

## **BCC KEY FIELDS:**

Family Planning

HIV/AIDS

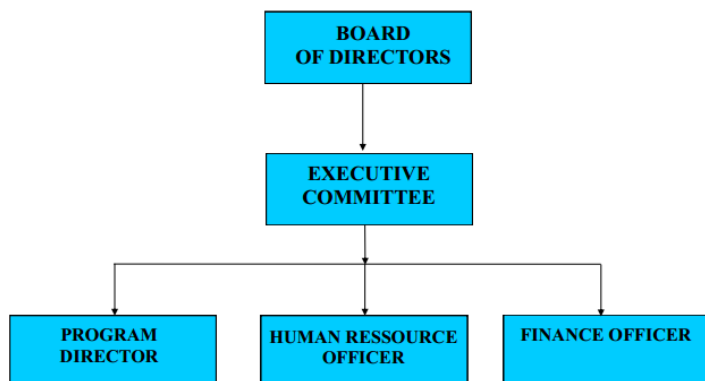
Drug Abuse

Education

Hygiene

G.B.V: Gender Based Violence

## LHI Organization Structure



## II. LHI REALIZATIONS IN 2020

In 2020, LHI achieved a lot. Its activities are statistically highlighted in the table below:

### 2.1 Administration

No.	ACHIEVEMENTS	DATE	Percentage
1.	CREATION OF LET'S HELP INTERNATIONAL	2 <sup>nd</sup> August 2020	100%
2.	ELABORATION OF THE CONSTITUTION AND STAFF ELECTION	8 <sup>th</sup> August 2020	100%
3.	OPERATING LICENCE	8 <sup>th</sup> October 2020	100%
4.	THE WAKE OF LHI ON THE WORLD WIDE WEB AND SOCIAL NETWORKS	28 <sup>th</sup> October 2020	100%
5.	LHI OFFICE INAUGURATION	7 <sup>th</sup> December 2020	100%
6.	LHI BANKING SYSTEM	18 <sup>th</sup> December 2020	100%

## 2.2. Education for Vulnerable Children

No.	ACHIEVEMENTS	DATE	Percentage
1.	IDENTIFICATION OF (70) MOST VULNERABLE CHILDREN	From 12/10/2020	70%

## 2.3. Family care & B.C.C= Behavior Change Program.

No.	ACHIEVEMENTS	DATE	Percentage
1.	LHI STAFF TRAINING ABOUT FAMILY PLANNING –F.P	On 12 <sup>th</sup> December 2020	100%
2.	HOME TO HOME SENSITIZATION WEEK ABOUT FAMILY PLANNING	(FROM 14-18/12/2020	100%

## III. CREATION OF LET'S HELP INTERNATIONAL –LHI AS A CHARITY ORGANIZATION

### 3.1 LHI CREATION GENERAL PHILOSOPHY

From a very long time ago, Education was as it is still today a daydream to a hundred thousand of children from low income families throughout the world but most especially those ones from the third world as well as a big part of Africa and Asia.

Robert Frost in his poem "The shepherd and his flock" tells about a young shepherd boy whom from the pasture looks the children of his master in their smart school uniforms and bags going to school. Considering the big difference between him and his master's children life condition sighs in a prayer: "Heavenly God, will I ever go to school?"

As the shepherd of Robert Frost represents a great number of children from vulnerable communities who looks education as impossible and unachievable dream.

The gap between rich and poor is terrible in this interconnected world to the extent that one may conclude (from a distance) that the globe earth we know is divided in two other earth globes – The one for the needy and the other for the rich. As that continues to be an ideal of many, the reality clearly prove that we normally don't have two different earth globes but only one to make one only human world.

Therefore, as it is true that there is only one world, the question asks: "How will those two different people live together in a single, shared world if nothing changes at all?" "Will there ever be found a bridge to remove that woeful gap and connect those groups for equity and equal opportunities?"

The answer is YES and NO. It is YES if the rich accept to open hands and help. It is no if the rich denies opening hands and help.

The Holy Bible says: "For the oppression of the poor, the sighing of the needy, now I will arise, says the Lord". Psalm 12:5. The world of today needs a helping hand and this is the birth reason of LET'S HELP INTERNATIONAL.

In his song of AN AFRICAN WOMAN, Okot P'Bitek says: "I have only one request-I don't ask for money-Although I have need of it- I do not ask for meat... I have only one request-All I ask is -that you remove the road block-from my path".

In addition, Jacqueline Novogratz states "BLUE SWEATER" : "My work in Africa taught me about the extraordinary resilience for people for whom poverty is a reality not because they don't work hard but **because there are too many obstacles in their way.**"

Poverty is the major road block and obstacle both Jacqueline and Okot talk about and have to be removed away from the way of vulnerable people in order to achieve their desired dreams.

And by financing and supporting education for vulnerable children and Training for the youth, is the capital way of bridging that social gap between the rich and poor. The same way, Education is the main tool to utilize to eradicate and get rid of poverty from human world because traditional agriculture and breeding systems will have no place in tomorrow's world of advanced technology.

Let's help together, let's give them hope for the future.

At least a chance to step up to school; because we are altogether LET'S HELP INTERNATIONAL.

### **3.2 ELABORATION OF THE CONSTITUTION AND STAFF ELECTION**

The general meeting of 8<sup>th</sup> August 2020 is the one that elaborated the constitution of LHI. That meeting was attended by eight (8) persons who approved and signed on the constitution and elected the LHI Executive Committee.

The election result proved the following:

- Chairperson: Festo Nduwayezu
- Secretary: Ellen Nyirandikuryayo
- Treasurer: Julie KABASINGA
- Advisor: Grace GASIGWA.

### **3.3 LEGAL OPERATING LICENCE**

LHI has been granted a Operational Permit from Kyegegwa District local government on 8<sup>th</sup> October 2020 in accordance with the 2016 Uganda Act regulating Non-Governmental Organizations, holding KYCD 125 as Permit Number.

In addition, certificate of registration as Community Based Organization was granted the same day holding KYCD 1182 as Registration Number.

### **3.4 THE WAKE OF LHI ON THE WORLD WIDE WEB AND SOCIAL NETWORKS**

LHI was presented online 28<sup>th</sup> October 2020 having [www.letshelpinternational.org](http://www.letshelpinternational.org) as its official website. And there on, different social networks (Facebook Page, Twitter wall, Instagram, LinkedIn and Youtube channel) were heated in order to disseminate different activities of LHI to a wide range of people whenever and wherever they might be located on the globe earth.

### **3.5 LHI BANKING SYSTEM**

The day of Friday 18<sup>th</sup> December 2020, LHI staff in charge travelled all the way to Mubende district in order to open a bank account under LHI name in the bank of Equity Uganda, Mubende branch, the action that was normally completed on Saturday 19<sup>th</sup> December 2020.

### **3.6 LHI OFFICE INAUGURATION**

Monday 7<sup>th</sup> December 2020 LHI opened its field office at Itambabiniga, Ruchinga, Kabweza Parish. The activity was attended by different LHI friends and partners and was led by LHI Chairperson Pr. Festo Nduwayezu.

## IV. LHI ON THE WORK GROUND

### 4.1 IDENTIFICATION OF MOST VULNERABLE CHILDREN



Identification of non-school going children became the first activity on the work plan when LHI Opened office. LHI Identified 70 cases of children who completely never attended school due to low income status of their families. Those children are from Itambabiniga, sweswe and Bukere age between 7-14 years old.

LHI also found 50 cases of drop out children only from Itambabiniga, Sweswe and Bukere aging between 10-15 years old.

School dropping reasons differ depending to individual circumstances. Most girls' cases appeared to be early pregnancies and marriages as well as prostitution.

In contrast, their drop out brothers, face hard life conditions in the refugee camp, because they have no required educational qualifications for the job, they need at least practical and technical skills based training and/or education for also creating their own jobs in a no-job situation to help them and supporting their families.



### 4.2 LHI STAFF TRAINING ABOUT FAMILY PLANNING –F.P

On 12<sup>th</sup> December 2020 LHI Staff held training about FP in order to prepare field officers for home to home sensitization activities which are done constantly.

This eight hours training started at 09:00 am and ended at 4:00 pm. It took place at LHI Field Office in Itambabiniga.

### 4.3 HOME TO HOME SENSITIZATION WEEK ABOUT FAMILY PLANNING (FROM 14-18/12/2020)

Refugees face many challenges in the refugee camps, which include poverty, hunger, lack of jobs, lack of shelter, failing to educate children and many more.

Having many children, in that unsafe and hard life condition, keeps fueling those problems. The children who don't attend schools turn in crimes, early marriage and prostitution and all those problems are harmful to the society.



Family Planning Home to Home Sensitization  
In Itambabiniga

LHI took the initiative through its program of Behavior Change, of sensitizing to people about Family Planning (F.P) in order to fight against those problems. After sensitization, a person committed to do family planning is referred to the qualified Hospital for further advice and assistance.

#### 4.3.1 TABLE SUMMARY WORK CHART

DATE	DAY	FAMILY VISITED	REFERRED	WAITING	REJECTED
14/12/2020	Monday	18	3	12	3
15/12/2020	Tuesday	22	5	14	3
16/12/2020	Wednesday	20	8	7	5
17/12/2020	Thursday	24	7	13	4
18/12/2020	Friday	23	5	12	6
<b>TOTAL</b>		107	28	58	21

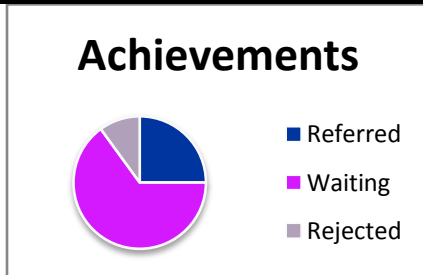
#### 4.3.2 EVALUATIONAL TABLE CHART

##### A. WORK TARGET OF THE WEEK

	TARGETED FAMILIES	REFERRED	WAITING	REJECTED
<b>5 DAYS</b>	100	25	65	10

**B. ACHIEVEMENTS**

TIME SPENT	FAMILY VISITED	REFERRED	WAITING	REJECTED
<b>5 DAYS</b>	107	28	58	21

**V. CHALLENGES AND OPPORTUNITIES**

As a new organization, LHI lacks many funds, equipments, resources, donations and partnerships for us to keep carrying out our missions. It is also unfortunate that a big number of our team is refugees who are not able to support the organization financially. And all that team serves the people by volunteering only.

Furthermore, the challenge of moving around the settlements due to lack of means of transport such as motorcycles and cars was also encountered.

Therefore, much is needed from various stakeholders and partners to help LHI to meet its mission.

But the LHI Team is incredible! It is committed, It is doing what it can, It is working hard to make everything alright wherever and whenever is possible. After all, It has hope for a positive change, because it is doing what is right to change the live the needy.

**VI. CONCLUSION**

We are really doing a hard but a great work! It a pleasure for the people, organizations, companies and other institutions to see them approaching us and support our activities in one way or the other, for the better change of the sad life of vulnerable people around the world.

This is also a great pleasure to thank LHI's partners including UNHCR, OPM, C-CAAL and other stakeholders for their support and cooperation to see that LHI fulfils its objectives.

Let's altogether **stand up for the needy!**

God bless you.

Done at Kyegegwa on December 28, 2020



**Pr. Festo NDUWAYEZU**  
LHI Chairperson

